

# 1200SJP

## ULTRA SERIES BOOM LIFT



### Performance

Platform Height	36.58 m
Working Height	38.58 m
Horizontal Outreach	22.86 m
Swing	360° Continuous
Platform Capacity-Restricted	450 kg
Platform Capacity-Unrestricted	230 kg
Platform Rotator	180° Hydraulic
JibPLUS® Length	2.44 m
Horizontal Motion	180°
Vertical Motion	130° (+75/-55)
Weight <sup>1</sup>	18,500 kg
Drive Speed — Lowered	5.2 km/h
Drive Speed — Elevated	0.5 km/h
Gradeability	45%
Turning Radius (Inside)	
Axles Retracted	4.39 m
Axles Extended	2.44 m
Turning Radius (Outside)	
Axles Retracted	6.86 m
Axles Extended	5.89 m

1. Certain options or country standards increase weight.

### Standard Specifications

#### Power Source

Diesel Engine		
Deutz TD2011LO40 Tier 4i	75 hp	56 kW
Fuel Tank Capacity	117 L	

#### Hydraulic System

- Hydraulic Tank Capacity 208.2 L

#### Tyres

- Standard 445/50D710 24 ply Urethane-Filled

### Standard Features

- Platform 0.91 m x 2.44 m
- Side Entry Self-Closing Self-Locking Gate
- Selectable Capacity Envelope
- Drive-Out Extendable Axles
- 180° Hydraulic Platform Rotator
- AC Receptacle in Platform
- Tilt Light and Alarm
- Swing-Out Engine Tray
- 12V-DC Auxiliary Power
- Hourmeter
- Control ADE® System
- Full-Time 4WD
- 3 Selectable Steering Modes
- Proportional Controls
- Engine Distress Warning/Shutdown—Selectable via JLG Analyzer
- 445/50D710 Foam-Filled Rim Protector Lug Tread Tyres
- Platform Console Machine Status Light Panel\*
- Lifting/Tie Down Lugs
- All Motion Alarm
- 5.5kVA Generator

\* Provides indicator lights at platform control console for system distress, fuel level, low fuel, 5 degree tilt light, and foot switch status.



### Accessories & Options

- .91 x 1.83 m Platform Entry
- Mesh to Mid Rail
- Light Package<sup>1</sup>
- Soft Touch System
- Special Hydraulic Oils
- Console Cover
- Corner Storage Tray
- ClearSky®
- SkyGuard™

1. Includes platform mounted worklights and drive/back-up lights.



760 rue Bériault, Longueuil, Québec (Canada) J4G 1R8  
1-833-360-3330 | info@sosequiment.ca

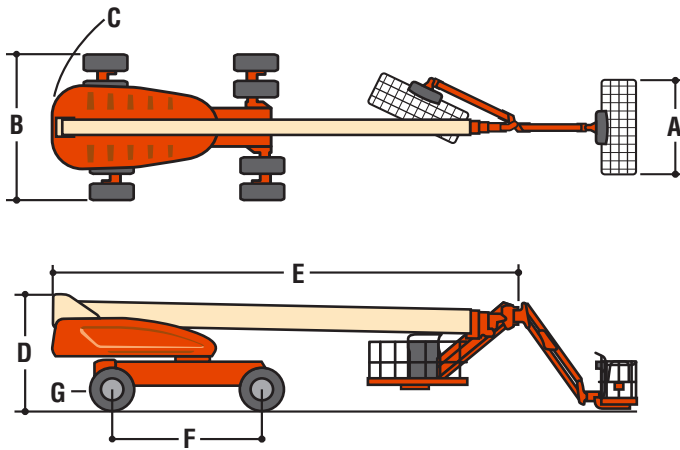
# 1200SJP

## ULTRA SERIES BOOM LIFT



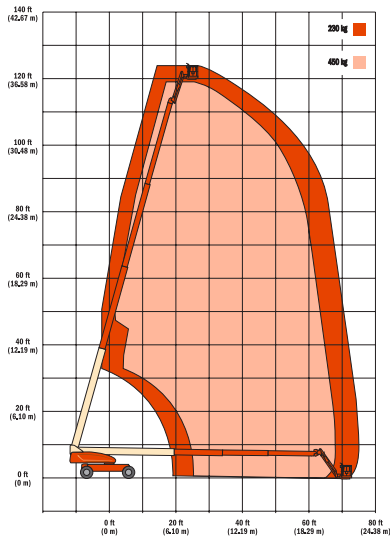
### Dimensions

All dimensions are approximate.



<b>A.</b> Platform Size	0.91 x 2.44 m
<b>B.</b> Overall Width Axles Retracted	2.49 m
Overall Width Axles Extended	3.81 m
<b>C.</b> Tailswing	1.67 m
<b>D.</b> Stowed Height	3.05 m
<b>E.</b> Overall Length Jib Stowed	10.64 m
Overall Length Jib Deployed	13.69 m
<b>F.</b> Wheel Base	3.81 m
<b>G.</b> Ground Clearance	
Axle	30 cm
Chassis	65 cm

### Load Chart



760 rue Bériault, Longueuil, Québec (Canada) J4G 1R8  
1-833-360-3330 | info@sosequiment.ca



### The JLG "1 & 5" Warranty

JLG Industries, Inc. backs its products with its exclusive "1 & 5" Warranty. We provide coverage on all products for one (1) full year and cover all specified major structural components for five (5) years. Due to continuous product improvements, we reserve the right to make specification and/or equipment changes without prior notification. This machine meets or exceeds AS/NZS 1418.10 2011 as originally manufactured for intended applications.

### JLG Industries (Australia)

358 Park Road  
Regents Park, NSW 2143  
Telephone 02 8718 6300  
Fax 02 8718 6377  
[www.jlg.com.au](http://www.jlg.com.au)

An Oshkosh Corporation Company