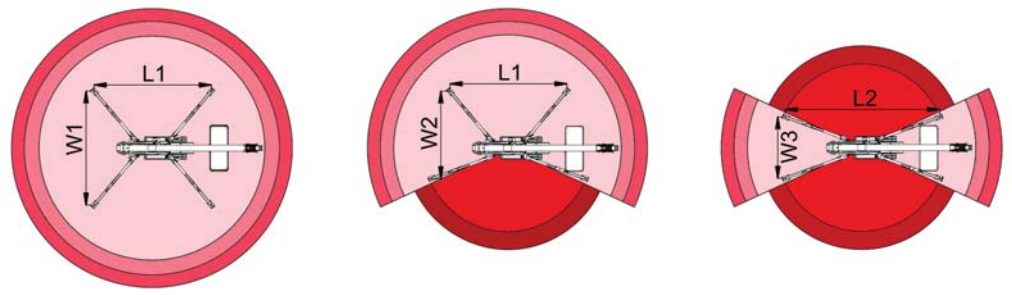
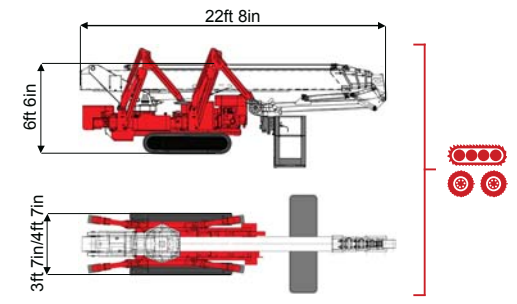
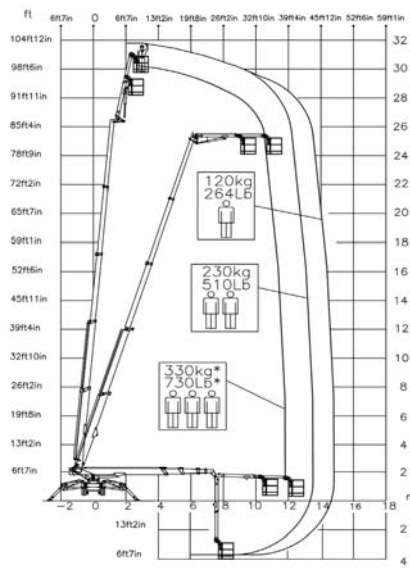




104ft 12in ↑
47ft 7in →
730 lb 👤👤👤



39ft 4in	44ft 3in	47ft 7in	24ft 3in	34ft 5in	L1	L2	W1	W2	W3
730 lb	550 lb	264 lb	730 lb	264/510 lb	16ft 9in	21ft 2in	15ft 7in	12ft 5in	9ft 3in

BI-ENERGY Diesel+AC

XTJ 105/C-R

104ft 12in **47ft 7in** **730 lb** **175°** **540°** **5ft 11in/2ft 4in** **90°+80°** **9ft 2in-15ft 5in** **15%** **40%** **1,86 mph** **13096 lb** **7716 lb** **54,71 psf** **94,59 psf** **3ft 7in/4ft 7in** **22ft 8in** **6ft 6in**

	Battery type	Battery charge	Add. Weight	Autonomy	Charging time	Electropump
ECO DC+AC	48V 320 A/h 5h	230V-48V 45A	990 lb	6-7 h endless	7h	48V 12 kW
ECO DC+AC	48V 270 A/h 5h	230V-48V 45A	880 lb	6-7 h endless	7h	48V 9 kW
HYBRID Diesel+DC	24V 240 A/h 5h	230V-24V 35A	440 lb	2-3 h endless	7h	24V 3 kW

SOSEQUIMENT
 760 rue Bériault, Longueuil, Québec (Canada) J4G 1R8
 1-833-360-3330 | info@sosequiment.ca

Characteristics and technical data are informative only and subjected to change without notice.