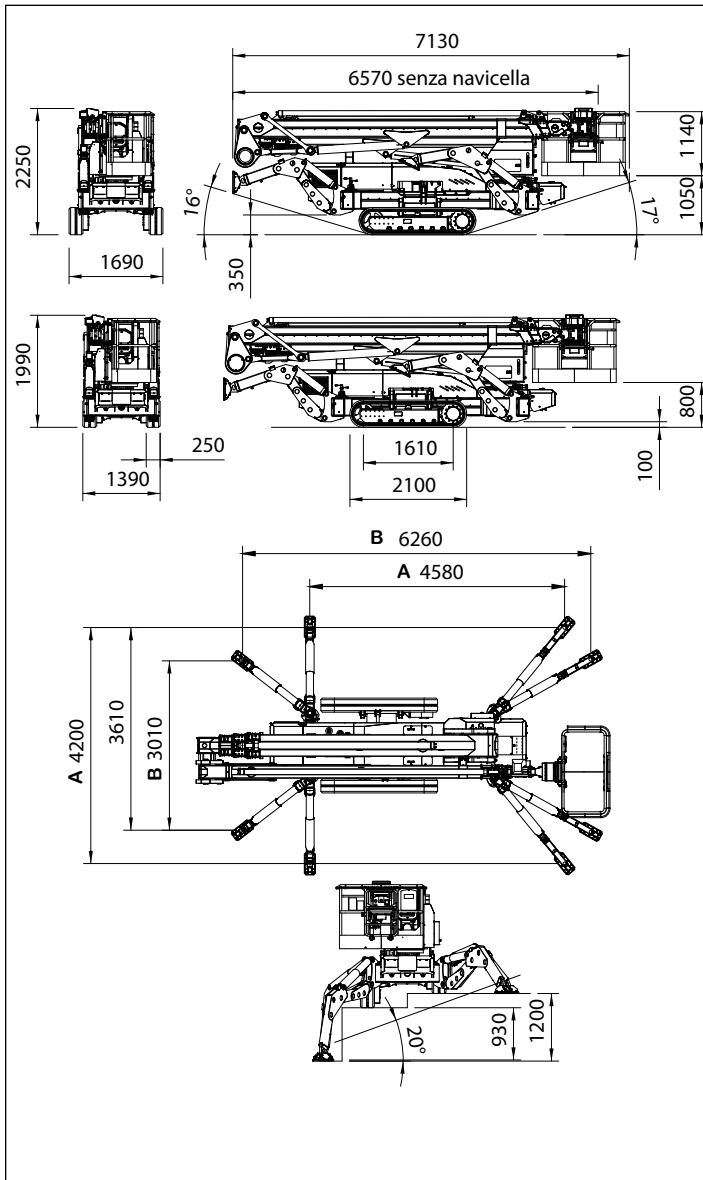
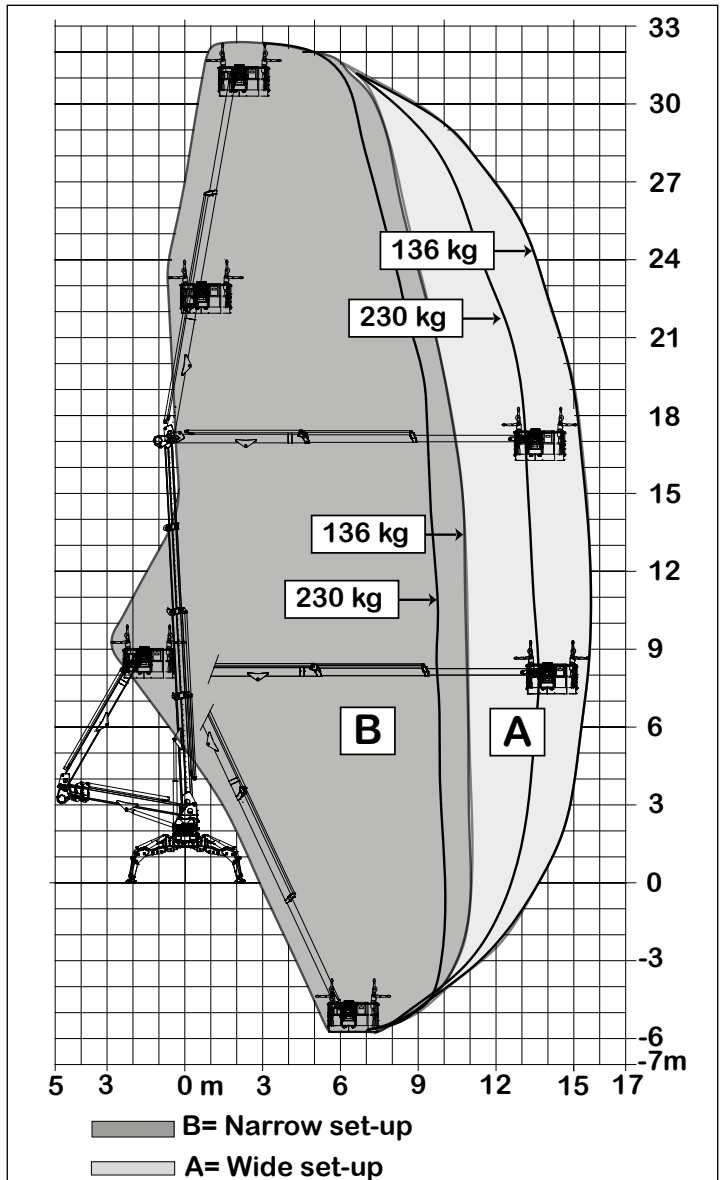


OVERALL DIMENSIONS



WORKING ENVELOPE



OPERATIONS



SERIE SPIDER 33.15

TECHNICAL DATA		VERSION		
		STD	E	ED
Max working height	m	32,40		
Max height basket floor	m	30,40		
Max side outreach	m	15,60		
Rotation angle	°	400		
Basket size (standard version)	m	1,63 x 0,87		
Basket rotation angle	°	90+90		
Max basket capacity (2 men)	Kg	230		
Length in stowed position (with detached basket)	m	7,13		
	m	6,57		
Min width in stowed position	m	1,39		
Min height in stowed position	m	1,99		
Stabilization foot-print	m	wide 4,21 x 4,58		
	m	narrow 3,07 x 6,26		
Max gradeability	deg/%	16° (29%)		
Max side gradeability	deg/%	17° (31%)		
Max speed	Km/h	2,0	1,2	2,0
WEIGHTS		STD	E	ED
Weight in working config.*	Kg	6500*	6800*	6800*
Ground pressure stowed machine (narrow tracking)	KN/m²	6,75	7,03	7,03
Ground pressure when on stabilizers.	KN/m²	3,48	3,48	3,61
Max point load per outrigger plate	KN	37,6	37,6	39,0
POWER		STD	E	ED
Engine D902 Kubota diesel	hp/rpm	22/3600	-	22/3600
Electric motor 380Vac	hp/Volt	15/380	15/380	-
Electric motor 24Vdc	hp/Volt	-	7,4/24	7,4/24
Battery capacity 24Vdc lead/acid	Ah	-	2x210	2x210
Battery capacity 24Vdc lithium-ion	Ah	-	400	400
Battery charger - lead battery	Ah	-	45	45
Battery charger - Lithium-ion	Ah	-	100/50	100/50

* Some weights may differ due to the chosen optionals.

STANDARD EQUIPMENTS		VERSION		
		STD	E	ED
Articulated with double telescopic boom		•		
Radio remote control for drive & stab with diagnostic (supplied with emergency wire)		•		
Hydraulically extending under carriage		•		
Double proportional drive speed (slow/fast)		•		
Triple stabilization set-up and automatic monitoring device with no rotation restrictions.		•		
Auto-stabilization by radio remote control.		•		
Automatic recovering push button on-board.		•		
Light allu basket and easily detachable		•		
Spare radio remote control batteries (2 supplied with charger included)		•		
Protected against falling objects by strong metal covers.		•		
Pipes & cables fully protected inside the booms.		•		
Electric outlets available into the basket 230/110Vac		•		
Air 6 water outlets into the basket (high pressure)		•		
Diesel KUBOTA water cooled engine.		•	---	•
Electric-pump 380Vac/3ph/15hp for indoor use		•	•	-
Deep-cycle batteries 24Vdc/420Ah, electric power-pack for indoor use.		---	•	•
Battery charger 24Vdc with power selector.		---	•	•
Phase inverter and electronic alert device.		•	•	---
EXTRAS - ON DEMAND		STD	E	ED
Non-marking tracks for delicate surfaces		•		
Electric emergency descent kit 24Vdc		•	---	---
Wind gauge to monitor max wind speed		•		
Basket working light		•		
Remote diagnostics and fleet-management		•		
Arctic lubricants for low temperature usage		•	---	•
Over-sized nylon plates and recovering frame		•		
Alu detachable basket 1,80x0,80m wide		•		
Alu detachable basket 2,20x0,80m wide		•		
INTERCOM device from basket to ground.		•		
Lithium-ion battery pack for longer working cycle		---	•	•
APPROVALS				
Europe EN280 - Canada: CS-B354 - Australia: AS14.18				



STD

- Combustion diesel engine
- 15CV electric motor with power pack



E - ELECTRIC

- Electric motor 15CV/380Vac/ThreePhase
- 24Vdc deep cycle batteries with electric power pack



ED - HYBRID

- Combustion diesel engine
- 24Vdc deep cycle batteries with electric power pack



PLATFORM BASKET

PLATFORM BASKET

Via Montessori, 1 - 42028 Poggio - RE - Italy
Tel. +39 0522 967666 - Fax +39 0522 967667
info@platformbasket.com



SOSEQUIMENT

760 rue Bériault, Longueuil, Québec (Canada) J4G 1R8
1-833-360-3330 | info@sosequiment.ca

REV-2 - 20-10-2015 DATI, DIMENSIONI E CARATTERISTICHE SONO FORNITI A TITOLO INDICATIVO E NON IMPEGNATIVO

campbelland.com

cod. 100506_EN

www.platformbasket.com