

# M250 Li-ion

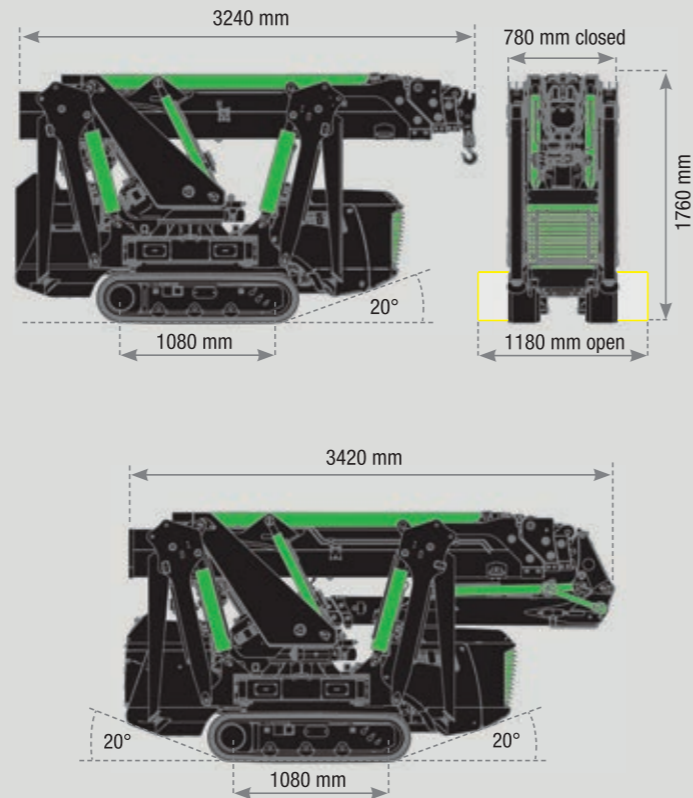
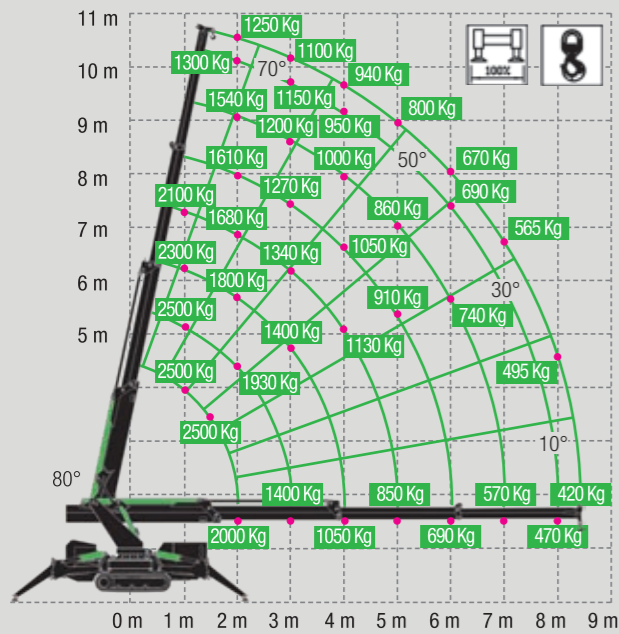
**SOSEQUIPMENT**







760 rue Bériault, Longueuil, Québec (Canada) J4G 1R8  
1-833-360-3330 | info@sosequipment.ca

M250 Li-ion

M RANGE

## M 250 Li-ion



-  Dimensions (H x W x L): 1,76 x 0,78 x 3,24 m
-  Weight (excluding accessories): 2420 kg
-  Lifting capacity: 2500 kg
-  Maximum outreach with hydraulic Jib (optional): 12,85 m
-  Maximum lifting height with hydraulic Jib (from the ground): 16,00 m
-  Maximum lifting height (underground-winch): -62,5 m



## M250 Li-ion. Electric Compact Crawler Crane.

**M250 Li-ion**, the attention given to the study of shapes and the exclusive line design. The aesthetic and functional harmony in a great technological project.

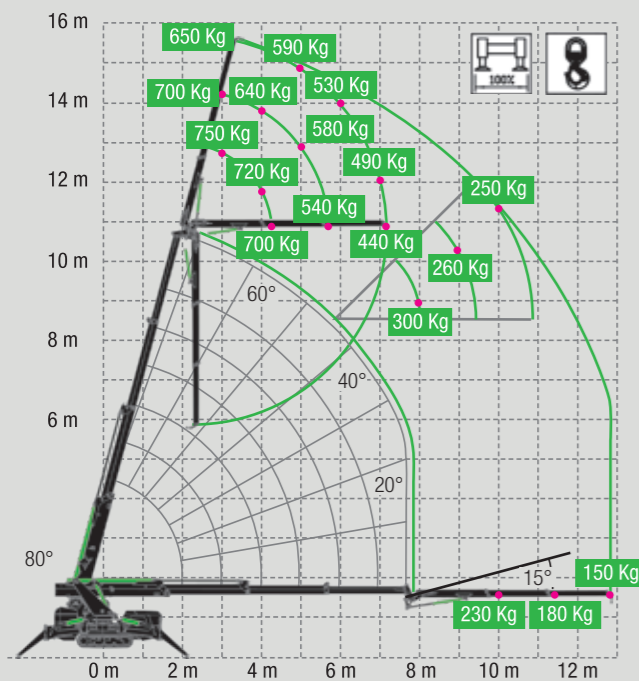
A solid crane, equipped with advanced technologies, top quality materials and components, to obtain the best overall performance. Built for indoor and outdoor use in limited spaces and hardly accessible buildings.

The dimensions and lightweight, combined to millimetric precision manoeuvrability, allow quick and less invasive operations.

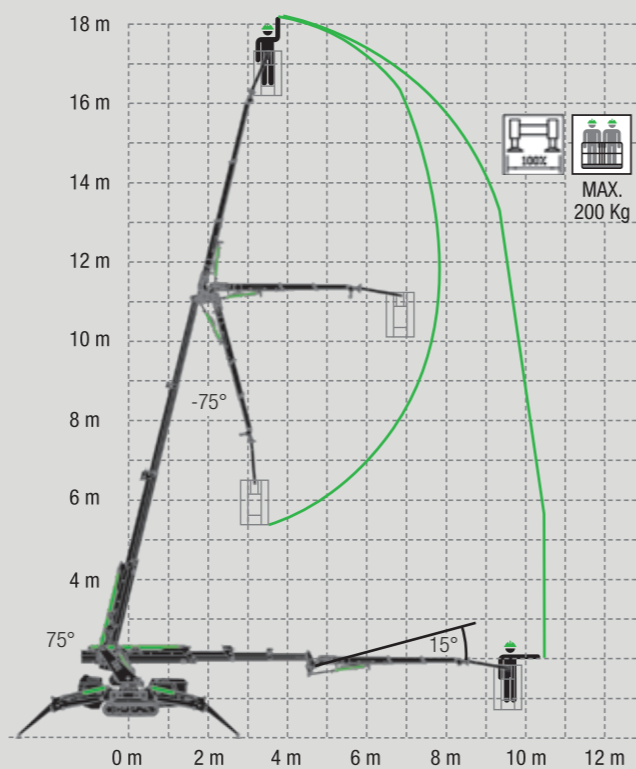
### Power:

- 1250kg load capacity at 10,40 mt. height, with boom in vertical position
- 650 load capacity at 16,00 mt. height, with boom and jib in vertical position.

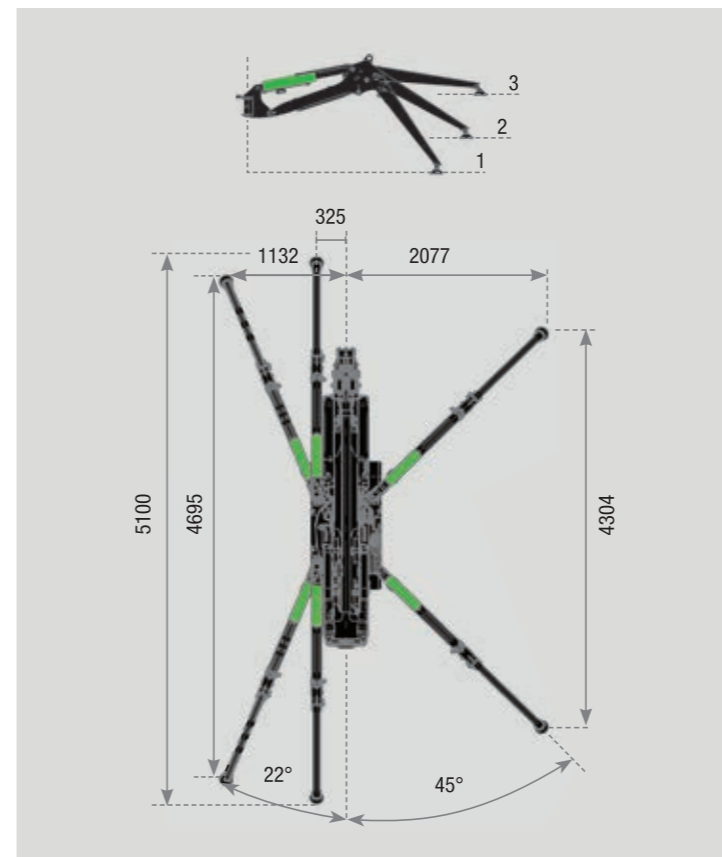
## M 250 Li-ion + Jib



## M 250 Li-ion + Basket



Technical data can be modified without prior notice



Technical data can be modified without prior notice



## Technical Specifications

### M060

### M060 LI-ION

### M250

### M250 LI-ION

### M400

 <b>Max capacity:</b>	580 Kg / 1,3 m	580 Kg / 1,3 m	2500 Kg / 1,5 m	2500 Kg / 1,5 m	4000 Kg / 2 m
 <b>Max outreach:</b>	3,01 m	3,01 m	8,43 m	8,43 m	12,10 m
 <b>Max outreach with Jib (optional):</b>	-	-	12,85 m	12,85 m	17,00 m
 <b>Max hook height:</b>	4,25 m	4,25 m	10,40 m	10,40 m	14,80 m
 <b>Max hook height with Jib (optional):</b>	-	-	16 m	16 m	21,10 m
 <b>Slewing angle   Rotation speed:</b>	-   25° + 25°	-   25° + 25°	Continuous   1,5 rpm	Continuous   1,5 rpm	Continuous   1 rpm
 <b>Winch (optional):</b> First layer pull   Rope length   Speed in direct pull	500 Kg   36 m   42 m / min	500 Kg   36 m   42 m / min	900 Kg   68 m   47 m / min	900 Kg   68 m   47 m / min	1000 Kg   60 m   47 m/min
 <b>Radio remote control:</b>	Scanreco Can-Bus + Display	NBB Can-Bus + Color Display	Scanreco Can-Bus + Display	Scanreco Can-Bus + Display	Scanreco Can-Bus + Display
 <b>Stability control:</b>	Electrohydraulic	Electronic	Electronic	Electronic	Electronic
 <b>Stability system:</b>	-	-	Max 4155x4300	Max 4155x4300	Max 4490x4570
 <b>Weights:</b> Standard crane   Jib   Electric motor Winch   Mobile ballast (Pick and Carry)	720 + 200 Kg ballast   -   140 Kg 28 Kg   -	720 + 200 Kg ballast   -   40 Kg 28 Kg   -	2420 Kg   210 Kg   40 Kg 65 Kg   -	2420 Kg   210 Kg   40 Kg 65 Kg   -	4300 Kg   230 Kg   40 Kg 65 Kg   300 Kg
 <b>Trasmission:</b> Scope   Pressure   Speed Max slope degree   Max pressure on the ground	Moto-reducer 30 l /min   150 bar   0-2 Km/h 20°   0,25 Kg/cm <sup>2</sup>	Moto-reducer 30 l /min   150 bar   0-2 Km/h 20°   0,25 Kg/cm <sup>2</sup>	Moto-reducer 50 l /min   170 bar   0-2 Km/h 25°   0,47 Kg/cm <sup>2</sup>	Moto-reducer 50 l /min   170 bar   0-2 Km/h 25°   0,47 Kg/cm <sup>2</sup>	Moto-reducer 55 l /min   200 bar   0-2 Km/h 25°   0,41 Kg/cm <sup>2</sup>
 <b>Thermal Engine:</b> Max power   Max torque   Tank capacity	8,7 Kw - 11,7 Hp   26,5 Nm   6 l	-	18,5 Kw - 24,8Hp   71,5 Nm   13 l	-	18,9 Kw - 25,7 Hp   64 Nm   25 l
 <b>Electric Engine:</b> Power supply   Battery capacity   Power	230 V   -   2,2 Kw + inverter	24 V   210 Ah   5,5 Kw - 8 Hp	230 V   -   2,2 Kw + inverter	48 V   200 Ah   8,5 Kw - 12 Hp	400 V   -   5,5 Kw 48 V   200 Ah   8,5 Kw - 12 Hp

Technical data can be modified without prior notice

Technical data can be modified without prior notice



## Standard Equipment

M060

M060 LI-10N

M250

M250 LI-10N

M400

Radio remote control with LCD display for crawler, chassis and crane function	●		●	●	●
Radio remote control with color display for each function of machine		●			
Continuous rotation			●	●	●
50° crane rotation	●				
180° crane rotation		●			
Predisposition for winch installation	●	●	●	●	●
Predisposition for Jib installation			●	●	●
Outriggers continuous variations control system			●	●	
Outriggers continuous variations control system					●
Automatic stabilization			●	●	●
Two speed crawler translation	●	●	●	●	●
Extendable crawler	●	●	●	●	
Manual endothermic engine rpm increment	●	●	●	●	●
N° 2 working LED lamps on the crawler			●	●	
N° 2 Lifting connections	●	●			
N° 4 Lifting connections			●	●	●
Electronic limiting device		●	●	●	●
Electrohydraulic limiting device	●				
Auto diagnostic		●	●	●	●
According to EN12999	●	●			
According to EN13000			●	●	●
BG Connect		●	●	●	●
Smart Stability Control (SSC)					●

Technical data can be modified without prior notice



## Optional Equipment

M060

M060 LI-10N

M250

M250 LI-10N

M400

Scanreco radio remote control crane function	●				
500 Kg hydraulic winch	●	●			
900 Kg hydraulic winch			●	●	
1000 Kg hydraulic winch					●
Lowered hook connections	●	●	●	●	●
Third line pull pulleys			●	●	
Fourth, third line pull pulleys					●
Plates for outriggers			●	●	●
Working LED light on the main boom	●	●	●	●	●
Working LED light on the Jib			●	●	●
N° 4 Working LED lights on the crawler					●
Hydraulic Jib with opening up to 195°			●	●	●
Mono phase electric engine 2,2 kW/230V with inverter	●		●	●	
Three phases electric engine 5,5 kW/400 V					●
Automatic endothermic engine rpm increment			●		●
No marking rubber pads	●	●	●	●	●
Two man baskets capacity CE			●	●	●
LED lights for outriggers					●
Green oil	●	●	●	●	●
Automatic crane closing			●	●	●
Electric engine with lithium battery					●

Technical data can be modified without prior notice