

SPIDER 13.65

TRACKED AERIAL WORKING PLATFORMS

EN



PL / TFORM
B A S K E T

SOSEQUIMENT

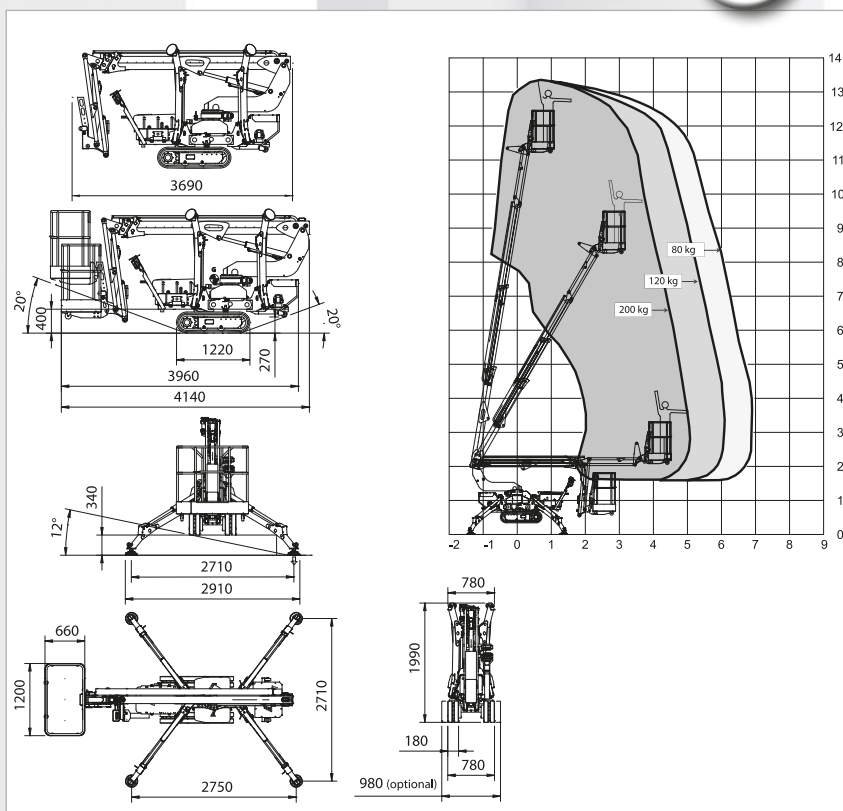
760 rue Bériault, Longueuil, Québec (Canada) J4G 1R8
1-833-360-3330 | info@sosequiment.ca

SERIES **SPIDER 13.65**
Compact, easy and lightweight for every use

- Unrivalled stability at high altitude
 - Ultra-compact stabilization and zero tail gate
 - Agile and stable on a variable width crawler tracks
 - Easy maintenance
 - Simple and intuitive on-board equipment
 - Ultra-light and easy to transport
- Standard with double drive speed
 - Fully protected by metal covers against falling objects.
 - Air/water and 230Vac outlets are available into the basket
 - Quick detach and interchangeable basket



campbellbv.com 31119



TECHNICAL SPECIFICATIONS		STD	E	ED
Maximum working height	m	13,40		
Floor height	m	11,40		
Maximum side outreach	m	7,00		
Rotation angle of the tower	°	360		
Aluminium basket dimensions	m	1,20 x 0,70		
Basket rotation angle	°	ND		
Maximum capacity of basket	Kg	200		
Length closed (basket disassembled)	m	3,55 (4,20)		
Minimum width closed	m	0,78		
Minimum height closed	m	1,98		
Overall dimensions Stabilization	m	2,80 X 2,80		
Maximum horizontal inclination	degrees/%	16° (29%)		
Maximum side inclination	degrees/%	12° (21%)		
Maximum speed	Km/h	3,50	1,70	3,50
WEIGHTS		STD	E	ED
Weight in work conditions*	Kg	1400*	1400*	1550*
Ground pressure stowed machine	KN/m²		3,06	
Ground pressure when on stabilizers	KN/m²		2,26	
Max point load on one stabilizer	KN		11,8	
POWER		STD	E	ED
Honda GX270 petrol engine	HP/rpm	8/3600	-	-
1B30 HATZ diesel engine	HP/rpm	7,2/3600	-	5,4/3600
Electric motor 220 Vac	CV/KW	3 / 2,2	3 / 2,2	-
Electric Motor 24 Vdc	CV/KW	-	5,5/4,0	5,5/4,0
Traction battery capacity	Ah	-	150 200	150 200
Battery charger	Ah	-	45 100/50	45 100/50

* Subject to change depending on configuration.